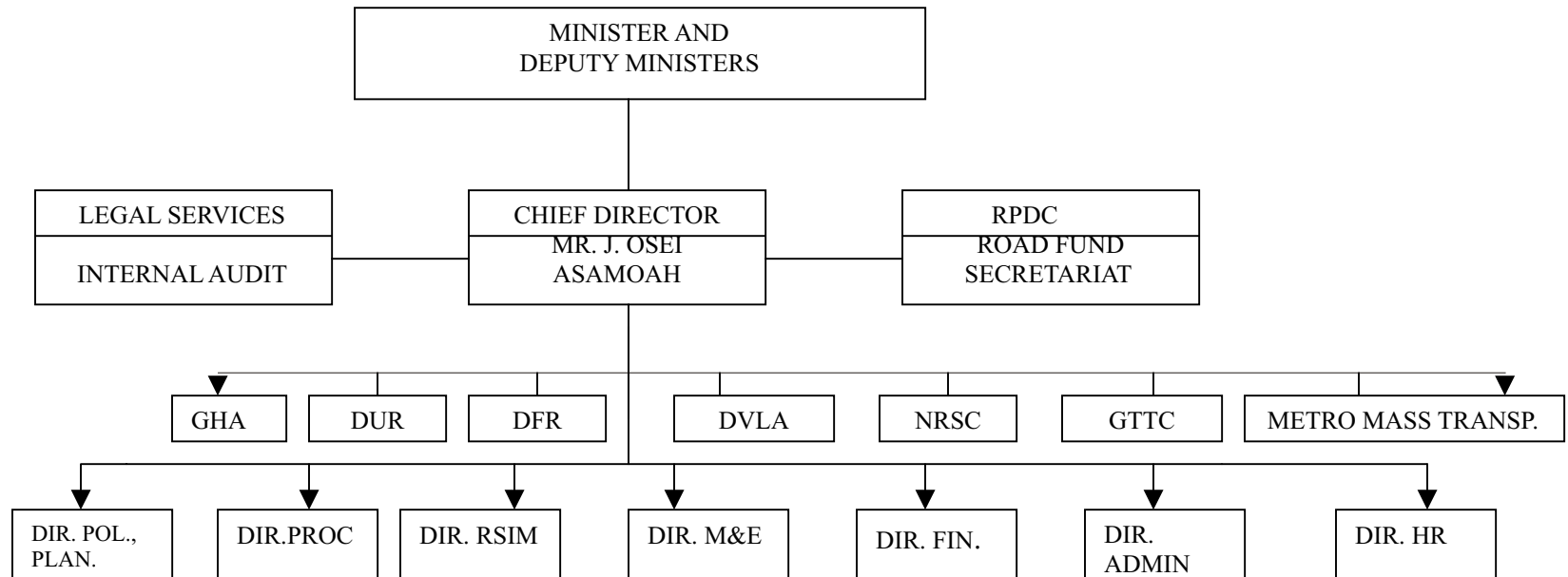


## ORGANISATIONAL STRUCTURE OF THE MINISTRY OF ROADS AND TRANSPORT



### ABBREVIATIONS

- |   |   |
|---|---|
| <ol style="list-style-type: none"> <li>1. RPDC - ROAD PROGRAMME DONNORS COORDINATION</li> <li>2. DVLA - DRIVER VEHICLE AND LICENSING AUTHORITY</li> <li>3. DUR - DEPARTMENT OF URBAN ROADS</li> <li>4. DFR - DEPARTMENT OF FEEDER ROADS</li> <li>5. NRSC - NATIONAL ROAD SAFETY COMMISSION</li> <li>6. RSIM - RESEARCH STATISTICS AND INFORMATION MANAGEMENT</li> <li>7. GTTC - GHANA TECHNICAL TRAINING INSTITUTE</li> <li>8. M &amp; E - MONITORING AND EVALUATION</li> </ol> | <ol style="list-style-type: none"> <li>9. ADMIN. - ADMINISTRATION</li> <li>10. PROC - PROCUREMENT</li> <li>11. GHA - GHANA HIGHWAY AUTHORITY</li> <li>12. HR. - HUMAN RESOURCES</li> <li>13. FIN. - FINANCE</li> <li>14. POL. PLAN - POLICY PLANNING</li> <li>15. MMT - METRO MASS TRANSPORT</li> </ol> |
|---|---|